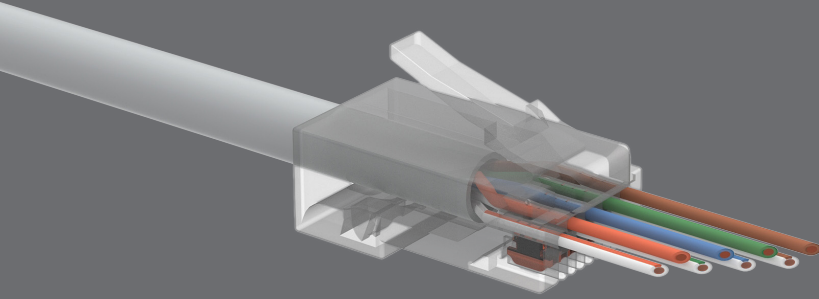


# EASY plug Solarix RJ45 CAT6 UTP for both solid and stranded wires



Product number:  
11239002

Type number:  
SXRJ45-6-UTP-EASY

EAN barcode:  
8595684704389



## Key features

- Quality unshielded category 6/Class E plug
- Designed for ethernet protocols, including 2.5GBASE-T and 5GBASE-T
- Very easy installation, pass-through design, using the HT-EASY tool
- 50 µin gold contact plating
- For both solid and stranded wires
- The plug meets the ISO/IEC 11801, EN 50173, and ANSI/TIA 568.2-E cabling standards

## Cabling standards

General standards EN 50173-1, EN 50173-2, ISO/IEC 11801-1, ISO/IEC 11801-2, ANSI/TIA 568.2-E  
Product standards EN 60603-7-4

## Supported protocols

	10BASE-T	100BASE-TX	1000BASE-T	2.5GBASE-T	5GBASE-T
Supported by the SXRJ45-6-UTP-EASY plug	YES	YES	YES	YES	YES

## Supported PoE

	802.3af	802.3at
PoE type	Type 1	Type 2
Maximum current	350 mA	600 mA
No. of pairs used	2	2
Supported by the SXRJ45-6-UTP-EASY plug	YES	YES



## Physical parameters

Plug construction	UTP, EASY (pass-through)
Plug type	RJ45 8p8c
Min. contacts lifetime	1000 connections/disconnections
Contacts plating	50 µin gold
Wire type	solid and stranded
Max. wire size (incl. insulation)	1.1 mm
Material of non-metallic parts	FR plastic according to UL94-0

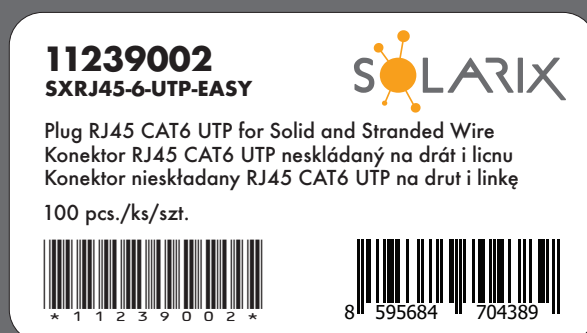
## Operation and storage

Storage temperature	-10 to 60 °C
Operating temperature	-40 to 70 °C
Max. operating humidity	93%

## Logistic parameters

Plugs packaging size 100 pcs (h x w x d)	200 mm x 130 mm x 20 mm
Weight 100 pcs	0.16 kg
Master packaging	50x 100 pcs
Batch and product numbers barcode	IDAutomation Code 39, ANSI/ISO/AIM specification
EAN code type	EAN-13

## Plug label



## Solarix warranties

Standard warranty **5 years**

## Related products

Product Number	Type Number	Description
26000001	SXKD-6-UTP-PVC	Installation Cable Solarix CAT6 UTP PVC Eca 500m/reel
26100001	SXKD-6-UTP-PVC	Installation Cable Solarix CAT6 UTP PVC Eca 305m/box
27724160	SXKD-6-UTP-PVC	Installation Cable Solarix CAT6 UTP PVC Eca 100m/box
26000021	SXKD-6-UTP-LSOH	Installation Cable Solarix CAT6 UTP LSOH Dca-s2,d2,a1 500m/reel
26100021	SXKD-6-UTP-LSOH	Installation Cable Solarix CAT6 UTP LSOH Dca-s2,d2,a1 305m/box
27724161	SXKD-6-UTP-LSOH	Installation Cable Solarix CAT6 UTP LSOH Dca-s2,d2,a1 100m/box
26000033	SXKD-6-UTP-LSOFR-B2ca	Installation Cable Solarix CAT6 UTP LSOFR B2ca-s1,d1,a1 500m/reel
27655193	SXKD-6-UTP-PE	Installation Cable Solarix CAT6 UTP PE Fca Outdoor 500m/reel
40020100	HT-EASY	HT-EASY Crimping tool for Solarix RJ45 plugs SXRJ45-xx-yyy-EASY

