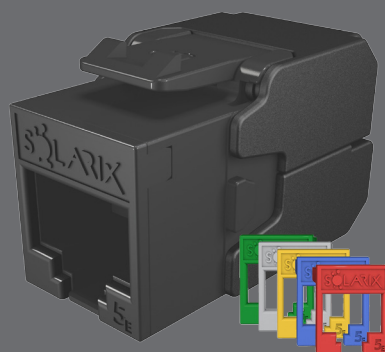


# Keystone Solarix CAT5E UTP RJ45 toolless colour modules



**Product number:**  
25286706

**Type number:**  
SXKJ-5E-UTP-RAL-SA

**EAN barcode:**  
8595684704884



## Key features

- Quality unshielded category 5E/Class D keystone
- Designed for high-speed ethernet protocols, including 2.5GBASE-T and 5GBASE-T\*
- Very easy toolless installation
- The shortened COMPACT HD keystone design is suitable for even the most demanding applications, including modular high-density patch panels and outlets (keystone depth is only 31.0 mm)
- The newly developed SECURE CAP includes an integrated cable stopping feature as well as the T568A and T568B colour wiring schemes
- The keystone meets the ISO/IEC 11801, EN 50173, and ANSI/TIA 568.2-E cabling standards
- The colour of the keystone is black
- For better port identification and easier management in the rack, it is possible to choose the colour of the front module of the keystone thanks to its unique RAL FIT system
- A black module is available as default, there are also modules with patch cable colours in the packaging – i.e. red, blue, yellow, green, and grey

## Cabling standards and technologies

General standards	EN 50173-1, EN 50173-2, ISO/IEC 11801-1, ISO/IEC 11801-2, ANSI/TIA 568.2-E
Product standards	EN 60603-7-2
Technologies applied	COMPACT HD, SECURE CAP, RAL FIT

## Supported protocols

	10BASE-T	100BASE-TX	1000BASE-T	2.5GBASE-T	5GBASE-T
Supported by the SXKJ-5E-UTP-RAL-SA keystone	YES	YES	YES	YES*	YES*

\* ) For the 2.5GBASE-T and 5GBASE-T protocols, the operability success and distance achieved may vary depending on the type and quality of installation.



## Supported PoE

	802.3af	802.3at
PoE type	Type 1	Type 2
Maximum current	350 mA	600 mA
No. of pairs used	2	2
Supported by the SXXJ-5E-UTP-RAL-SA keystone	YES	YES

## Physical parameters

Keystone construction	UTP
Number of ports	1x RJ45 8p8c
Min. port lifetime	1000 connections/disconnections
Contacts plating	50 µin gold
Termination	toolless
Size and type of conductor	AWG 26 – 22, solid wire
Material of non-metallic parts	FR plastic according to UL94-0
Keystone body colour	black
Snap-in modules colours	black, red, blue, yellow, green, and grey

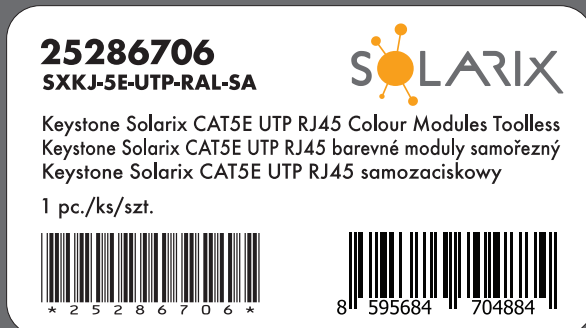
## Operation and storage

Operating temperature	-10 to 60 °C
Storage temperature	-40 to 70 °C
Max. operating humidity	93%

## Logistic parameters

Keystone packaging size (h x w x d)	145 mm x 90 mm x 20 mm, plastic bag
Weight	9 g
Included in the package	1x keystone, 1x plastic SECURE CAP with wiring map, 6x colour RAL FIT modules (black, red, blue, yellow, green, and grey)
Master packaging	400x keystones
Master packaging size (h x w x d)	230 mm x 515 mm x 400 mm, carton box
Batch marking	yes (on the product, its packaging and on the transport master box)
Batch and product numbers barcode	IDAutomation Code 39, ANSI/ISO/AIM specification
EAN code type	EAN-13

## Keystone label



## Solarix warranties

Standard warranty	5 years
System warranty	30 years



## Related products

Product Number	Type Number	Description
27655141	SXKD-5E-UTP-PVC	Installation Cable Solarix CAT5E UTP PVC Eca 305m/box
27655150	SXKD-5E-UTP-PVC	Installation Cable Solarix CAT5E UTP PVC Eca 500m/box
27655151	SXKD-5E-UTP-PVC	Installation Cable Solarix CAT5E UTP PVC Eca 1000m/reel
27724130	SXKD-5E-UTP-PVC	Installation Cable Solarix CAT5E UTP PVC Eca 100m/box
27724119	SXKD-5E-UTP-LSOH	Installation Cable Solarix CAT5E UTP LSOH Dca-s1,d2,a1 305m/box
27724125	SXKD-5E-UTP-LSOH	Installation Cable Solarix CAT5E UTP LSOH Dca-s1,d2,a1 500m/box
27655171	SXKD-5E-UTP-LSOH	Installation Cable Solarix CAT5E UTP LSOH Dca-s1,d2,a1 1000m/reel
27724131	SXKD-5E-UTP-LSOH	Installation Cable Solarix CAT5E UTP LSOH Dca-s1,d2,a1 100m/box
27655191	SXKD-5E-UTP-PE	Installation Cable Solarix CAT5E UTP PE Fca Outdoor 305m/box
27655196	SXKD-5E-UTP-PEG	Installation Cable Solarix CAT5E UTP PE Fca GEL-FILLED Outdoor 305m/box
24000100	SX24M-0-STP-BK-UNI-N	Unloaded Patch Panel Solarix 24 ports Black 1U
24200243	SX24M-0-STP-BK-UNI	19" Modular Patch Panel Solarix 24 ports 1U
23100101	SX9-1-0-WH	Solarix Modular Wall Outlet for 1 Keystone, White
23100102	SX9-2-0-WH	Solarix Modular Wall Outlet for 2 Keystones, White
23100103	SX9-3-0-WH	Solarix Modular Wall Outlet for 3 Keystones, White
23100201	SXF-M-1-22,5-WH-P	French Style Module Solarix 22.5 x 45mm for 1 Keystone, 90°
23100202	SXF-M-1-45-WH-P	French Style Module Solarix 45 x 45mm for 1 Keystone, 90°
23100203	SXF-M-2-45-WH-P	French Style Module Solarix 45 x 45mm for 2 Keystones, 90°
23100204	SXF-M-2-45-WH-U	French Style Module Solarix 45 x 45mm for 2 Keystones, 45°
23100206	SXF-M-1-22,5-WH-U	French Style Module Solarix 22.5 x 45mm for 1 Keystone, 45°

