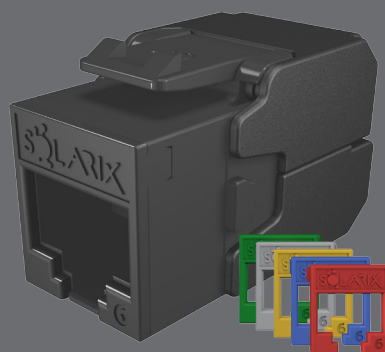


Keystone Solarix CAT6 UTP RJ45 toolless colour modules



Product number:
25286806

Type number:
SXKJ-6-UTP-RAL-SA

EAN barcode:
8595684704891



Key features

- Quality unshielded category 6/Class E keystone
- Designed for high-speed ethernet protocols, including 2.5GBASE-T and 5GBASE-T
- Very easy toolless installation
- The shortened COMPACT HD keystone design is suitable for even the most demanding applications, including modular high-density patch panels and outlets (keystone depth is only 31.0 mm)
- The newly developed SECURE CAP includes an integrated cable stopping feature as well as the T568A and T568B colour wiring schemes
- The keystone meets the ISO/IEC 11801, EN 50173, and ANSI/TIA 568.2-E cabling standards
- The colour of the keystone is black
- For better port identification and easier management in the rack, it is possible to choose the colour of the front module of the keystone thanks to its unique RAL FIT system
- A black module is available as default, there are also modules with patch cable colours in the packaging – i.e. red, blue, yellow, green, and grey
- The electrical performance of the keystone has been authorized by the FORCE TECHNOLOGY independent testing laboratory in the EC VERIFIED certification program, including the 4PPoE standard (i.e. IEEE 802.3bt)

Cabling standards and technologies

General standards	EN 50173-1, EN 50173-2, ISO/IEC 11801-1, ISO/IEC 11801-2, ANSI/TIA 568.2-E
Product standards	EN 60603-7-4, IEC 60512-99-002
Testing authority	FORCE TECHNOLOGY
Certification program	EC VERIFIED, Component Level
Technologie keystoneu	COMPACT HD, SECURE CAP, RAL FIT

Supported protocols

	10BASE-T	100BASE-TX	1000BASE-T	2.5GBASE-T	5GBASE-T
Supported by the SXKJ-6-UTP-RAL-SA keystone	YES	YES	YES	YES	YES



Supported PoE

	802.3af	802.3at
PoE type	Type 1	Type 2
Maximum current	350 mA	600 mA
No. of pairs used	2	2
Supported by the SXXJ-6-UTP-RAL-SA keystone	YES	YES

Physical parameters

Keystone construction	UTP
Number of ports	1x RJ45 8p8c
Min. port lifetime	1000 connections/disconnections
Contacts plating	50 µin gold
Termination	toolless
Size and type of conductor	AWG 26 – 22, solid wire
Material of non-metallic parts	FR plastic according to UL94-0
Keystone body colour	black
Snap-in modules colours	black, red, blue, yellow, green, and grey

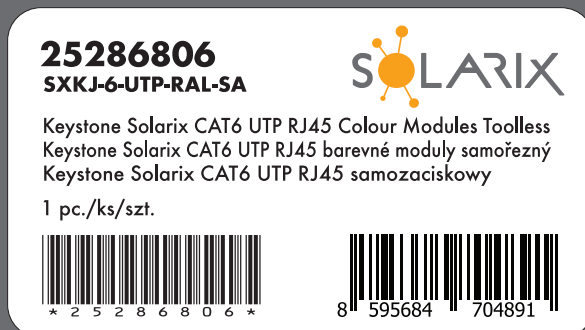
Operation and storage

Operating temperature	-10 to 60 °C
Storage temperature	-40 to 70 °C
Max. operating humidity	93%

Logistic parameters

Keystone packaging size (h x w x d)	145 mm x 90 mm x 20 mm, plastic bag
Weight	9 g
Included in the package	1x keystone, 1x plastic SECURE CAP with wiring map, 6x colour RAL FIT modules (black, red, blue, yellow, green, and grey)
Master packaging	400x keystones
Master packaging size (h x w x d)	230 mm x 515 mm x 400 mm, carton box
Batch marking	yes (on the product, its packaging and on the transport master box)
Batch and product numbers barcode	IDAutomation Code 39, ANSI/ISO/AIM specification
EAN code type	EAN-13

Keystone label



Solarix warranties

Standard warranty	5 years
System warranty	30 years





We recognize the importance of regular checks of Solarix products that customers use in their networks. That is why we have the electrical parameters of our cables and connecting hardware tested by independent laboratories. Certificates issued by these authorities are an important part of our Solarix product support and guarantee products reliability to our customers. This is also true for the SXXJ-6-UTP-RAL-SA keystone, which has been tested by the FORCE TECHNOLOGY laboratory as part of the EC VERIFIED certification program.

Related products

Product Number	Type Number	Description
26000001	SXKD-6-UTP-PVC	Installation Cable Solarix CAT6 UTP PVC Eca 500m/reel
26100001	SXKD-6-UTP-PVC	Installation Cable Solarix CAT6 UTP PVC Eca 305m/box
27724160	SXKD-6-UTP-PVC	Installation Cable Solarix CAT6 UTP PVC Eca 100m/box
26000021	SXKD-6-UTP-LSOH	Installation Cable Solarix CAT6 UTP LSOH Dca-s2,d2,a1 500m/reel
26100021	SXKD-6-UTP-LSOH	Installation Cable Solarix CAT6 UTP LSOH Dca-s2,d2,a1 305m/box
27724161	SXKD-6-UTP-LSOH	Installation Cable Solarix CAT6 UTP LSOH Dca-s2,d2,a1 100m/box
26000033	SXKD-6-UTP-LSOHFR-B2ca	Installation Cable Solarix CAT6 UTP LSOHFR B2ca-s1,d1,a1 500m/reel
27655193	SXKD-6-UTP-PE	Installation Cable Solarix CAT6 UTP PE Fca Outdoor 500m/reel
24000100	SX24M-0-STP-BK-UNI-N	Unloaded Patch Panel Solarix 24 ports Black 1U
24200243	SX24M-0-STP-BK-UNI	19" Modular Patch Panel Solarix 24 ports 1U
23100101	SX9-1-0-WH	Solarix Modular Wall Outlet for 1 Keystone, White
23100102	SX9-2-0-WH	Solarix Modular Wall Outlet for 2 Keystones, White
23100103	SX9-3-0-WH	Solarix Modular Wall Outlet for 3 Keystones, White
23100201	SXF-M-1-22,5-WH-P	French Style Module Solarix 22.5 x 45mm for 1 Keystone, 90°
23100202	SXF-M-1-45-WH-P	French Style Module Solarix 45 x 45mm for 1 Keystone, 90°
23100203	SXF-M-2-45-WH-P	French Style Module Solarix 45 x 45mm for 2 Keystones, 90°
23100204	SXF-M-2-45-WH-U	French Style Module Solarix 45 x 45mm for 2 Keystones, 45°
23100206	SXF-M-1-22,5-WH-U	French Style Module Solarix 22.5 x 45mm for 1 Keystone, 45°

