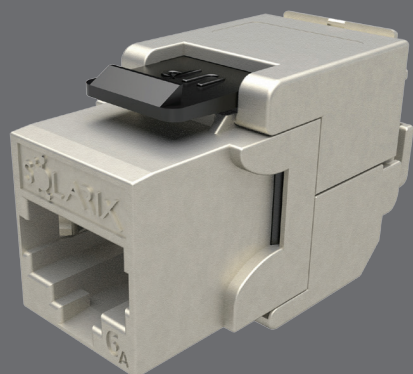


Multipack 24 pcs – 10G keystones Solarix CAT6A STP RJ45 toolless



Product number:
25286912

Type number:
SXKJ-10G-STP-BK-SA

EAN barcode:
8595684703238



Key features

- Quality shielded category 6A/Class E_A keystones
- Designed for ethernet protocols, including 2.5GBASE-T, 5GBASE-T, and 10GBASE-T
- Very easy toolless installation
- 50 µm gold contact plating
- The keystones meet the ISO/IEC 11801, EN 50173, and ANSI/TIA 568.2-E cabling standards
- Their form factor complies with the requirements of the EN 60603-7 specifications (i.e. the keystones are compatible with other manufacturers' modular outlets that meet this standard)
- The colour of the keystones is black (inner parts) and silver (metal body)
- The multipack packaging significantly speeds up the installation of these Solarix keystones and also is more environmentally friendly (i.e. without any plastic packaging)
- The electrical performance of these keystones has been authorized by the FORCE TECHNOLOGY independent testing laboratory in the EC VERIFIED certification program, including the 4PPoE standard (i.e. IEEE 802.3bt)

Cabling standards

General standards	EN 50173-1, EN 50173-2, ISO/IEC 11801-1, ISO/IEC 11801-2, ANSI/TIA 568.2-E
Product standards	EN 60603-7-51, IEC 60512-99-002
Testing authority	FORCE TECHNOLOGY
Certification program	EC VERIFIED, Component Level

Supported protocols

	10BASE-T	100BASE-TX	1000BASE-T	2.5GBASE-T	5GBASE-T	10GBASE-T
Supported by the SXKJ-10G-STP-BK-SA keystones	YES	YES	YES	YES	YES	YES



Supported PoE

	802.3af	802.3at	802.3bt	802.3bt
PoE type	Type 1	Type 2	Type 3	Type 4
Maximum current	350 mA	600 mA	600 mA	960 mA
No. of pairs used	2	2	4	4
Supported by the SXXJ-10G-STP-BK-SA keystones	YES	YES	YES	YES

Physical parameters

Keystones construction	STP
Number of ports in the multipack	24x RJ45 8p8c
Min. port lifetime	1000 connections/disconnections
Contacts plating	50 µin gold
Termination	toolless
Size and type of conductor	AWG 26 – 22, solid wire
Material of non-metallic parts	FR plastic according to UL94-0
Keystones body colour	black (inner parts) and silver (metal body)

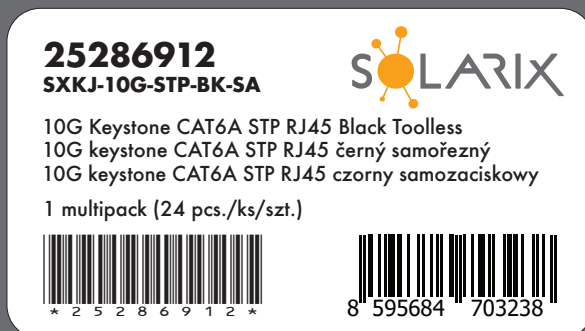
Operation and storage

Operating temperature	-10 to 60 °C
Storage temperature	-40 to 70 °C
Max. operating humidity	93%

Logistic parameters

Keystones packaging size (h x w x d)	60 mm x 148 mm x 120 mm, carton box
Weight	680 g
Included in the multipack	24x keystone, 24x plastic cap with wiring map, 24x plastic strap
Master packaging	24x multipack (576 keystones)
Master packaging size (h x w x d)	270 mm x 370 mm x 320 mm, carton box
Batch marking	yes (on the products, its packaging and on the transport master box)
Batch and product numbers barcode	IDAutomation Code 39, ANSI/ISO/AIM specification
EAN code type	EAN-13

Keystones label



Solarix warranties

Standard warranty	5 years
System warranty	30 years





We recognize the importance of regular checks of Solarix products that customers use in their networks. That is why we have the electrical parameters of our cables and connecting hardware tested by independent laboratories. Certificates issued by these authorities are an important part of our Solarix product support and guarantee products reliability to our customers. This is also true for the SXXJ-10G-STP-BK-SA keystone, which have been tested by the FORCE TECHNOLOGY laboratory as part of the EC VERIFIED certification program.

Related products

Product Number	Type Number	Description
26000025	SXKD-6A-STP-LSOH	Installation Cable Solarix CAT6A STP LSOH Dca-s1,d2,a1 500m/reel
26000037	SXKD-6A-STP-LSOH-B2ca	Installation Cable Solarix CAT6A STP LSOH B2ca-s1,d1,a1 500m/reel
26000038	SXKD-6A-FFTP-LSOH	Installation Cable Solarix CAT6A FFTP LSOH Dca-s2,d2,a1 500m/reel
26000040	SXKD-6A-STP-PE	Installation Cable Solarix CAT6A STP PE Fca 500m/reel
27000007	SXKD-7-SSTP-LSOH	Installation Cable Solarix CAT7 SSTP LSOH Cca-s1,d1,a1 1000 MHz 500m/reel
27000010	SXKD-7-SSTP-LSOHFR-B2ca	Installation Cable Solarix CAT7 SSTP LSOHFR B2ca-s1,d1,a1 1000 MHz 500m/reel
27000022	SXKD-7A-1200-SSTP-LSOHFR-B2ca	Installation Cable Solarix CAT7A SSTP LSOHFR B2ca-s1,d1,a1 1200 MHz 500m/reel
24000100	SX24M-0-STP-BK-UNI-N	Unloaded Patch Panel Solarix 24 ports Black 1U
23100101	SX9-1-0-WH	Solarix Modular Wall Outlet for 1 Keystone, White
23100102	SX9-2-0-WH	Solarix Modular Wall Outlet for 2 Keystones, White
23100103	SX9-3-0-WH	Solarix Modular Wall Outlet for 3 Keystones, White
23100201	SXF-M-1-22,5-WH-P	French Style Module Solarix 22.5 x 45mm for 1 Keystone, 90°
23100202	SXF-M-1-45-WH-P	French Style Module Solarix 45 x 45mm for 1 Keystone, 90°
23100203	SXF-M-2-45-WH-P	French Style Module Solarix 45 x 45mm for 2 Keystones, 90°
23100204	SXF-M-2-45-WH-U	French Style Module Solarix 45 x 45mm for 2 Keystones, 45°
23100206	SXF-M-1-22,5-WH-U	French Style Module Solarix 22.5 x 45mm for 1 Keystone, 45°

