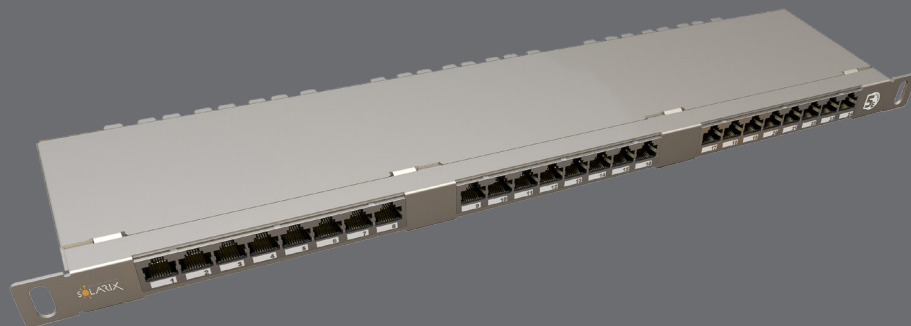


# 19" high-density patch panel Solarix 24x RJ45 CAT5E STP 0.5U



Product number:  
24000145

Type number:  
SX24HD-5E-STP-SL

EAN barcode:  
8595684700046



## Key features

- Quality 19" shielded high-density category 5E/Class D patch panel
- Designed for ethernet protocols, including 2.5GBASE-T and 5GBASE-T\*
- With management bar
- 24 ports RJ45 with 50 µin gold contact plating
- Dual IDC termination block 110/Krone type (both T568A and T568B wiring)
- The patch panel meets the ISO/IEC 11801, EN 50173, and ANSI/TIA 568.2-E cabling standards
- The colour of the patch panel is silver
- 0.5U size (i.e. two HD patch panels easily fit into 1U position)

## Cabling standards

General standards EN 50173-1, EN 50173-2, ISO/IEC 11801-1, ISO/IEC 11801-2, ANSI/TIA 568.2-E  
Product standards EN 60603-7-3

## Supported protocols

	10BASE-T	100BASE-TX	1000BASE-T	2.5GBASE-T	5GBASE-T
Supported by the SX24HD-5E-STP-SL patch panel	YES	YES	YES	YES*	YES*

\*) For the 2.5GBASE-T and 5GBASE-T protocols, the operability success and distance achieved may vary depending on the type and quality of installation.

## Supported PoE

	802.3af	802.3at
PoE type	Type 1	Type 2
Maximum current	350 mA	600 mA
No. of pairs used	2	2
Supported by the SX24HD-5E-STP-SL patch panel	YES	YES



## Physical parameters

Patch panel construction	STP
Number of ports	24x RJ45 8p8c
Min. port lifetime	1000 connections/disconnections
Contacts plating	50 µin gold
Termination block type	dual 110/Krone
Number of terminations	200
Size and type of conductor	AWG 26 – 22, solid wire
Material of non-metallic parts	FR plastic according to UL94-0
Patch panel body colour	silver
Number of units	0.5U
Height	22 mm
Width	484 mm
Depth	101.5 mm

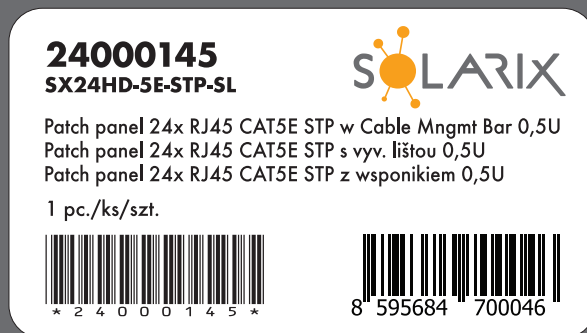
## Operation and storage

Max. operating humidity	93%
Operating temperature	-10 to 60 °C
Storage temperature	-40 to 70 °C

## Logistic parameters

Patch panel packaging size (h x w x d)	35 mm x 540 mm x 125 mm, carton box
Weight	1.5 kg
Included in the package	1x patch panel, 4x M6 mounting kit, 24x plastic strap, grounding wire
Master packaging	14x panel
Master packaging size (h x w x d)	240 mm x 550 mm x 270 mm, carton box
Batch marking	yes (on the product, its packaging and on the transport master box)
Batch and product numbers barcode	IDAutomation Code 39, ANSI/ISO/AIM specification
EAN code type	EAN-13

## Patch panel label



## Solarix warranties

Standard warranty	5 years
System warranty	30 years

## Related products

Product Number	Type Number	Description
27655142	SXKD-5E-FTP-PVC	Installation Cable Solarix CAT5E FTP PVC Eca 305m/box
27655144	SXKD-5E-FTP-PVC	Installation Cable Solarix CAT5E FTP PVC Eca 500m/reel
27655147	SXKD-5E-FTP-LSOH	Installation Cable Solarix CAT5E FTP LSOH Dca-s1,d2,a1 305m/box
27655152	SXKD-5E-FTP-LSOH	Installation Cable Solarix CAT5E FTP LSOH Dca-s1,d2,a1 500m/reel
27655153	SXKD-5E-FTP-LSOHFR-B2ca	Installation Cable Solarix CAT5E FTP LSOHFR B2ca-s1,d1,a1 500m/reel
27655192	SXKD-5E-FTP-PE	Installation Cable Solarix CAT5E FTP PE Fca Outdoor 305m/box
27655195	SXKD-5E-FTP-PE-SAM	Installation Cable Solarix CAT5E FTP PE Fca Outdoor Self-Supporting 305m/reel
27655197	SXKD-5E-FTP-PVC+PE	Installation Cable Solarix CAT5E FTP PVC+PE Fca Outdoor Double 305m/reel