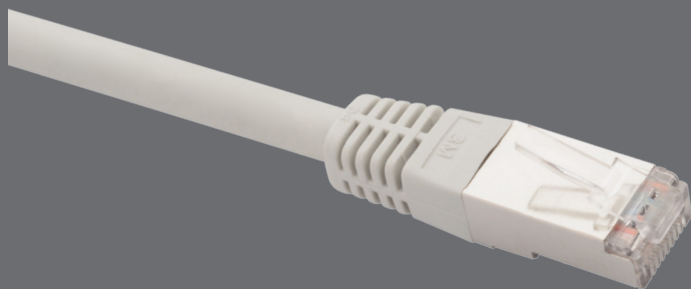


# 10G patch cables Solarix CAT6A SSTP 2x RJ45



**Product number**  
2877xxxx

**Type number:**  
C6A-315GY-yyMB



## Key features

- High quality shielded category 6A/Class E<sub>A</sub> patch cables
- Designed for ethernet protocols, including 2.5GBASE-T, 5GBASE-T, and 10GBASE-T
- High reliability and flexibility
- 50 µin gold contact plating
- Quality copper AWG 26/7 stranded wire
- LSOH sheath
- S/FTP cable construction
- The patch cables meet the ISO/IEC 11801, EN 50173, and ANSI/TIA 568.2-E cabling standards
- Available lengths 0,5m, 1m, 2m, 3m, 5m, 7m, 10m, 15m, and 20m
- The colour of patch cables is grey
- Due to their design, these Solarix patch cables are compatible with high-density network devices

## Cabling standards

General standards	EN 50173-1, EN 50173-2, ISO/IEC 11801-1, ISO/IEC 11801-2, ANSI/TIA 568.2-E
Product standards	EN 60603-7-51, EN 50288-10-2, IEC 61156-6
Sheath type	LSOH
Sheath standards	EN 60332-1-2, EN 60754-2, EN 61034-1, EN 61034-2

## Supported protocols

	10BASE-T	100BASE-TX	1000BASE-T	2.5GBASE-T	5GBASE-T	10GBASE-T
Supported by the C6A-315GY-yyMB patch cables	YES	YES	YES	YES	YES	YES



## Supported PoE types

	802.3af	802.3at	802.3bt	802.3bt
PoE type	Type 1	Type 2	Type 3	Type 4
Maximum current	350 mA	600 mA	600 mA	960 mA
No. of pairs used	2	2	4	4
Supported by the C6A-315GY-yyMB patch cables	YES	YES	YES	YES

## Physical parameters

Patch cable construction	S/FTP
Number of connectors	2x RJ45 8p8c
Min. contacts lifetime	1000 connections/disconnections
Contacts plating	50 µin gold
Sheath type	LSOH
Conductor type and size	copper stranded wire, AWG 26/7 (7x 0.16 mm ± 0.008 mm)
Conductor diameter with insulation	1.05 mm ± 0.06 mm
Cable diameter	5.8 mm ± 0.2 mm
Patch cable colour	grey RAL 7035

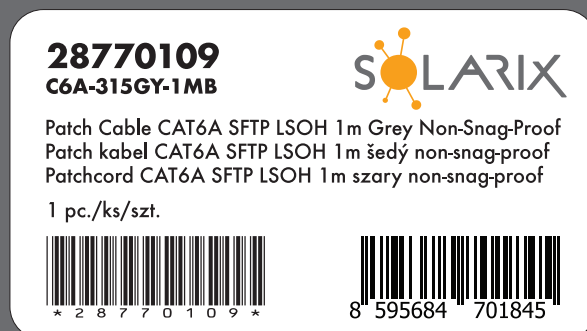
## Operation and storage

Operating temperature	-20 to 60 °C
Storage temperature	-20 to 60 °C
Max. operating humidity	93%

## Logistic parameters

Batch marking	yes (on the product, its packaging and on the transport master box)
Batch and product numbers barcode	IDAutomation Code 39, ANSI/ISO/AIM specification
EAN code type	EAN-13

## Patch cable label



## Solarix warranties

Standard warranty **5 years**



## Related products

Product Number	Type Number	Description
25286902	SXKJ-10G-STP-BK-SA	10G Keystone Solarix CAT6A STP RJ45 Black Toolless
25286903	SXKJ-10G-STP-BK-NA	10G Keystone Solarix CAT6A STP RJ45 Black
25286907	SXKJ-10G-STP-RAL-SA	10G Keystone Solarix CAT6A STP RJ45 Colour Modules Toolless, GROUND LOCK, Component Level and 4PPoE certification
25286912	SXKJ-10G-STP-BK-SA	MULTIPACK 24 pcs - 10G Keystone Solarix CAT6A STP Toolless
25286913	SXKJ-10G-STP-BK-NA	MULTIPACK 24 pcs - 10G Keystone Solarix CAT6A STP RJ45 Black
26000025	SXKD-6A-STP-LSOH	Installation Cable Solarix CAT6A STP LSOH Dca-s1,d2,a1 500m/reel
26000037	SXKD-6A-STP-LSOH-B2ca	Installation Cable Solarix CAT6A STP Orange B2ca-s1,d1,a1 500m
26000038	SXKD-6A-FFTP-LSOH	Installation Cable Solarix CAT6A FFTP Dca-s2,d2,a1 500m
26000040	SXKD-6A-STP-PE	Installation Cable Solarix CAT6A STP PE Outdoor Fca 500m/reel
27000007	SXKD-7-SSTP-LSOH	Installation Cable Solarix CAT7 SSTP LSOH Cca-s1,d1,a1 500m/reel
27000010	SXKD-7-SSTP-LSOHFR-B2ca	Installation Cable Solarix CAT7 SSTP LSOHFR B2ca-s1,d1,a1 500m
27000022	SXKD-7A-1200-SSTP-LSOHFR-B2ca	Installation Cable Solarix CAT7A SSTP LSOHFR B2ca-s1,d1,a1 500m
24000100	SX24M-0-STP-BK-UNI-N	Unloaded Patch Panel Solarix 24 port Black 1U

## Notes

\*) xxxx = product number for a specific patch cable length (e.g. 28770109 for 1m length)

\*\*) yy = type number for a specific patch cable length (e.g. C6A-315GY-10MB for 10m length)